

OGC CityGML Hackathon

Datasets available for practical work

Izabela Hurst

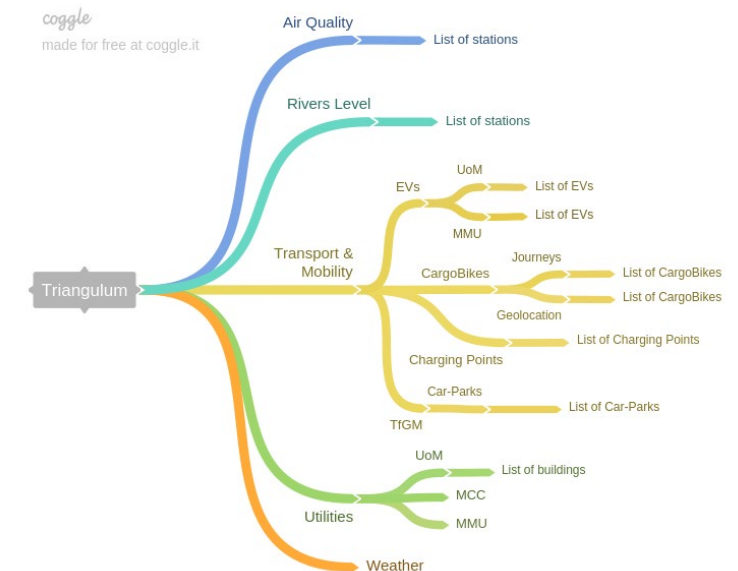
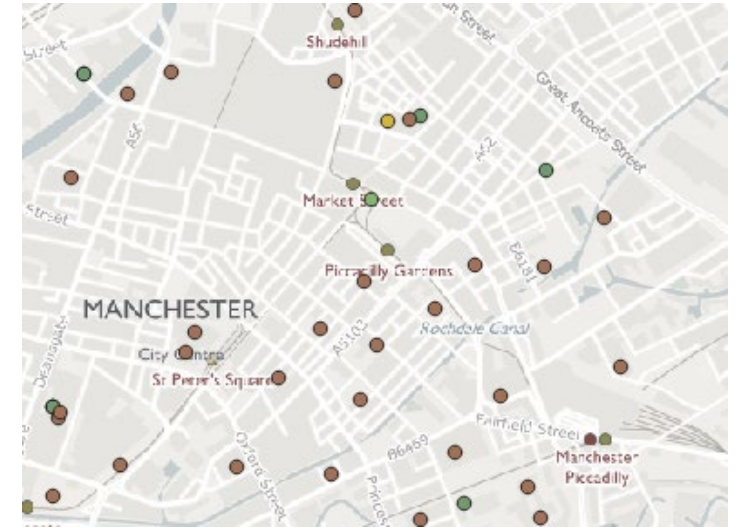
Main sources of data



- **Manchester-I**
 - portal for city related data, real-time data sources Hub
 - created through the EU's Horizon 2020 project 'Triangulum'
 - Data generated from two projects: 'Triangulum' and 'CityVerve' which aim to build and deliver a smarter, more connected Manchester, creating a city that uses technology to meet the complex needs of its people
 - Triangulum – focused on specific interventions in energy, mobility, ICT and the use of data in applications
 - CityVerve – pioneering the use of IoT technologies to redefine 'smart' in the context of living, working city.

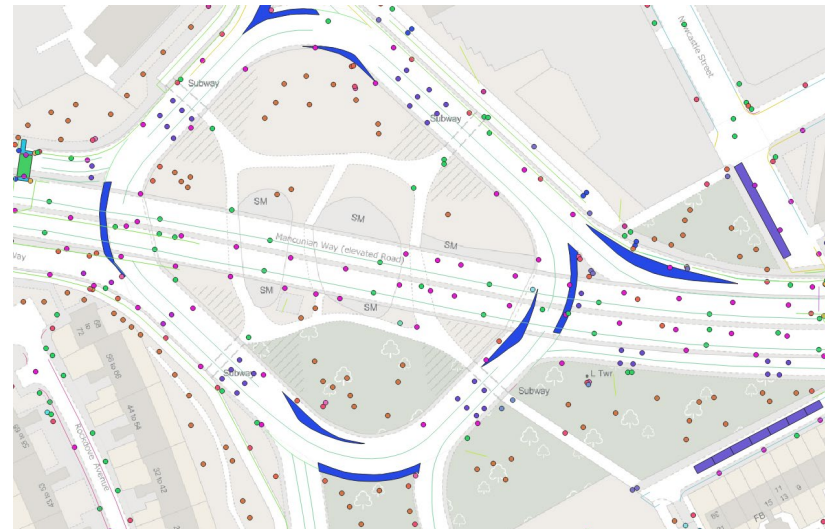
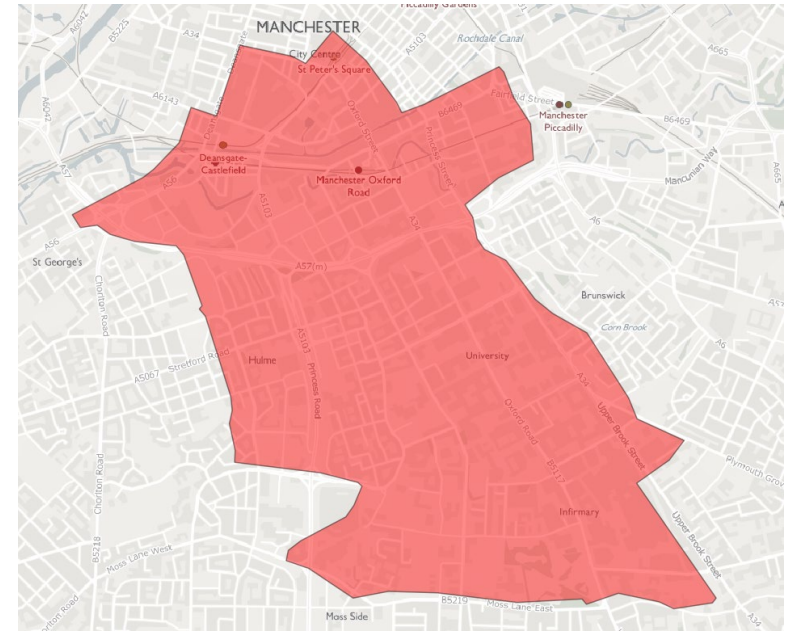
Main sources of data

- **Manchester-I** - available data:
 - Utilities - energy consumption for University of Manchester estates;
 - Air quality – air quality measures from DEFRA;
 - Rivers level - water level measured in a number of keypoints across the river and canal system of Greater Manchester;
 - Weather – data collected from the Whitworth Meteorological Observatory
 - Transport and mobility – car parks, EV charging stations, sessions and journeys, cargo bikes
- **TfGM** - cycle counters for 10 locations in Manchester



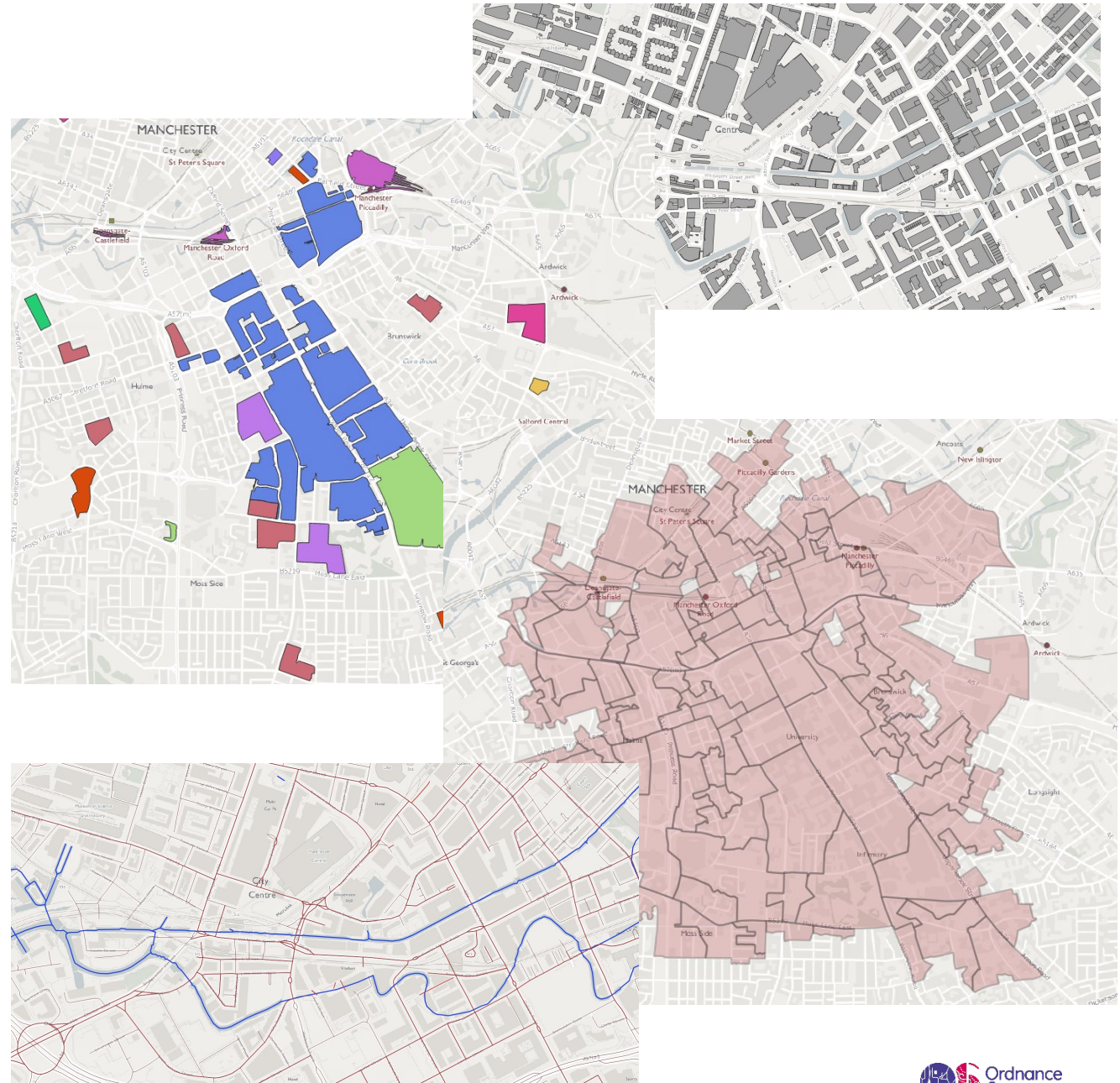
Main sources of data

- **Ordnance Survey** – data created for CityVerve project:
 - Street asset line features eg road markings, street furniture
 - Street asset points from eg tree, litter bin, street lamp
 - Street asset polygons eg parking bay, box junction, traffic island



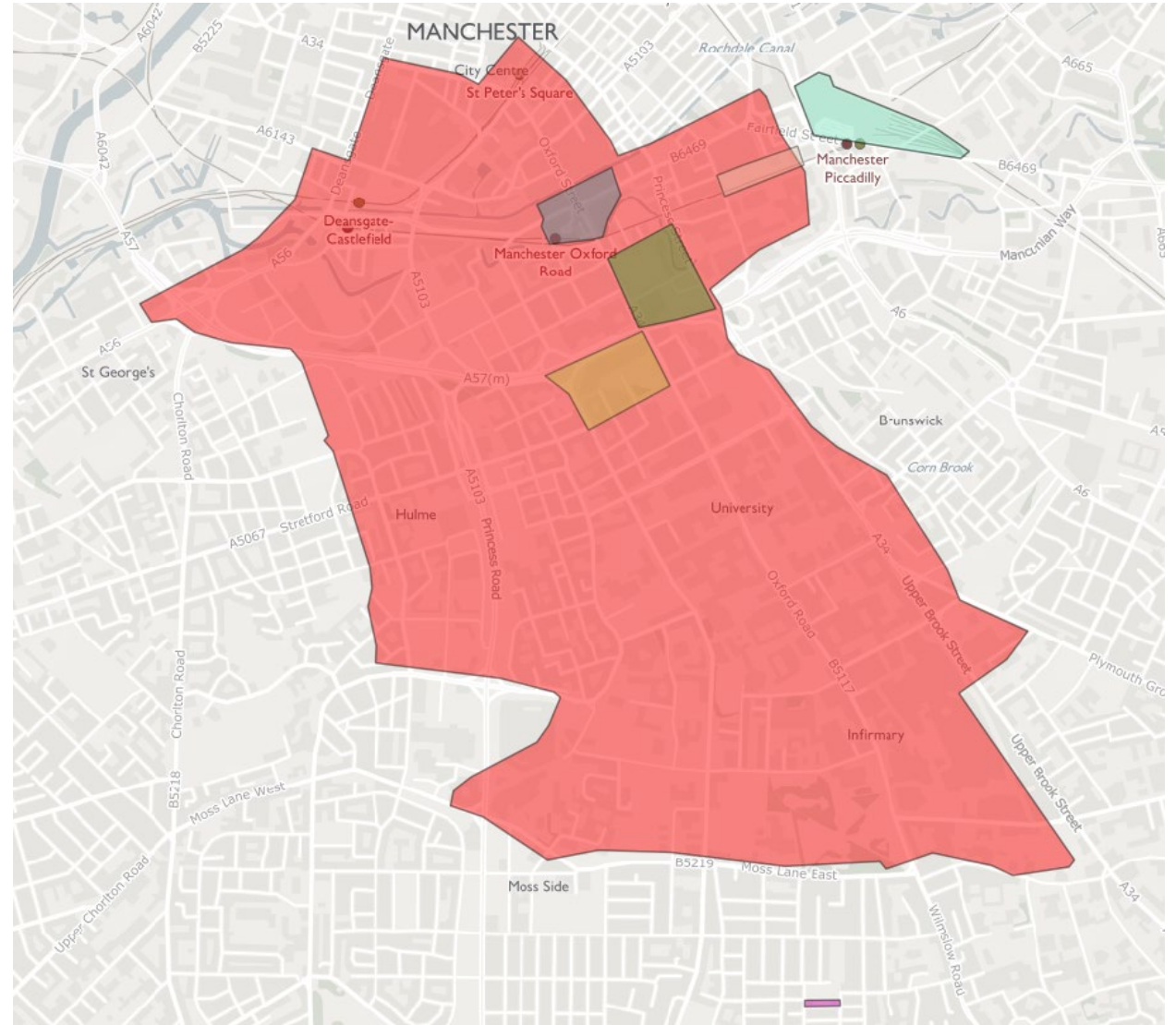
Main sources of data

- Ordnance Survey – datasets derived from OS Products:
 - Topographic areas, greenspaces, functional sites with access points, wards, OS Boundary Line and ONS lookup data
 - Addresses, points of interest, postcodes
 - Watercourse links, road links, streets



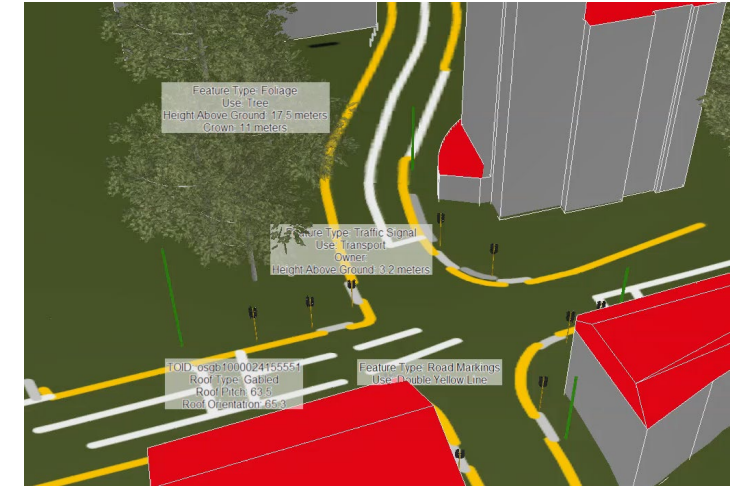
Main sources of data

- **Ordnance Survey – AOIs:**
 - Whitworth_Str_Oxford_Rd
 - MMU All Saints
 - Piccadilly Station
 - Charles Street
 - Sackville Building Granby Road
 - Heald Avenue



Main sources of data

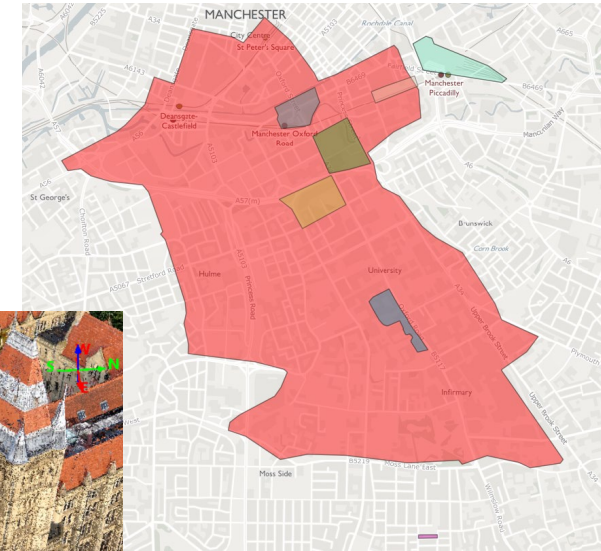
- Datasets available for AOIs:
 - DSM
 - DTM
 - CityGML– LOD1 and LOD2
 - Orthoimagery
 - Building Footprints
 - 3D Mesh tiles



Main sources of data

- **Ordnance Survey – Manchester UAVdata:**

- DEM
- Point Cloud
- Orthorectified imagery



- **Ordnance Survey – other data:**

- OSHQ Blender model
- CityGML v2 data from Manchester and Singapore

