



# GEO.works<sup>TM</sup> Team



Utility Mapping Services



Berenice International Group



Prisma Solutions

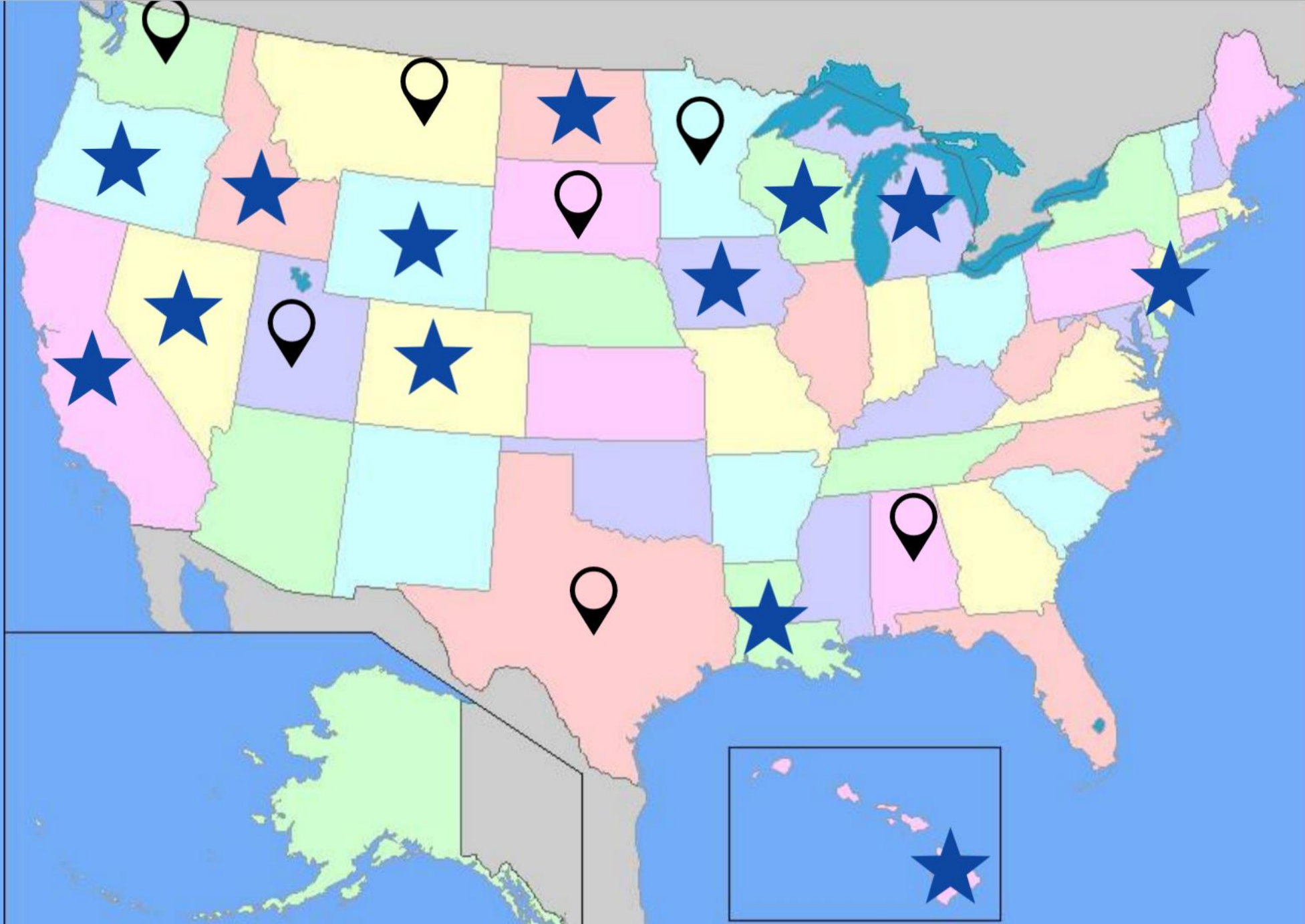




**Eng + Surveying  
Geophysics + IT**



**Multi Discipline  
Multi National**

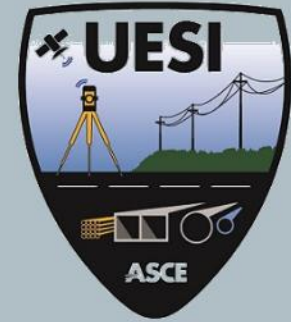






# Key Person

---



---

**Philip Meis**

As-Built / Utility Investigation Chairman





# 3D SUE Savings

SR 510 Washington State



10%

30%



50%

0





# Recent 3D Projects

48

**LAX APM**  
Automated People Mover

1

2

**PSE**  
Port of Tacoma

**LAX ITF West**  
Intermodal Transportation  
Facility

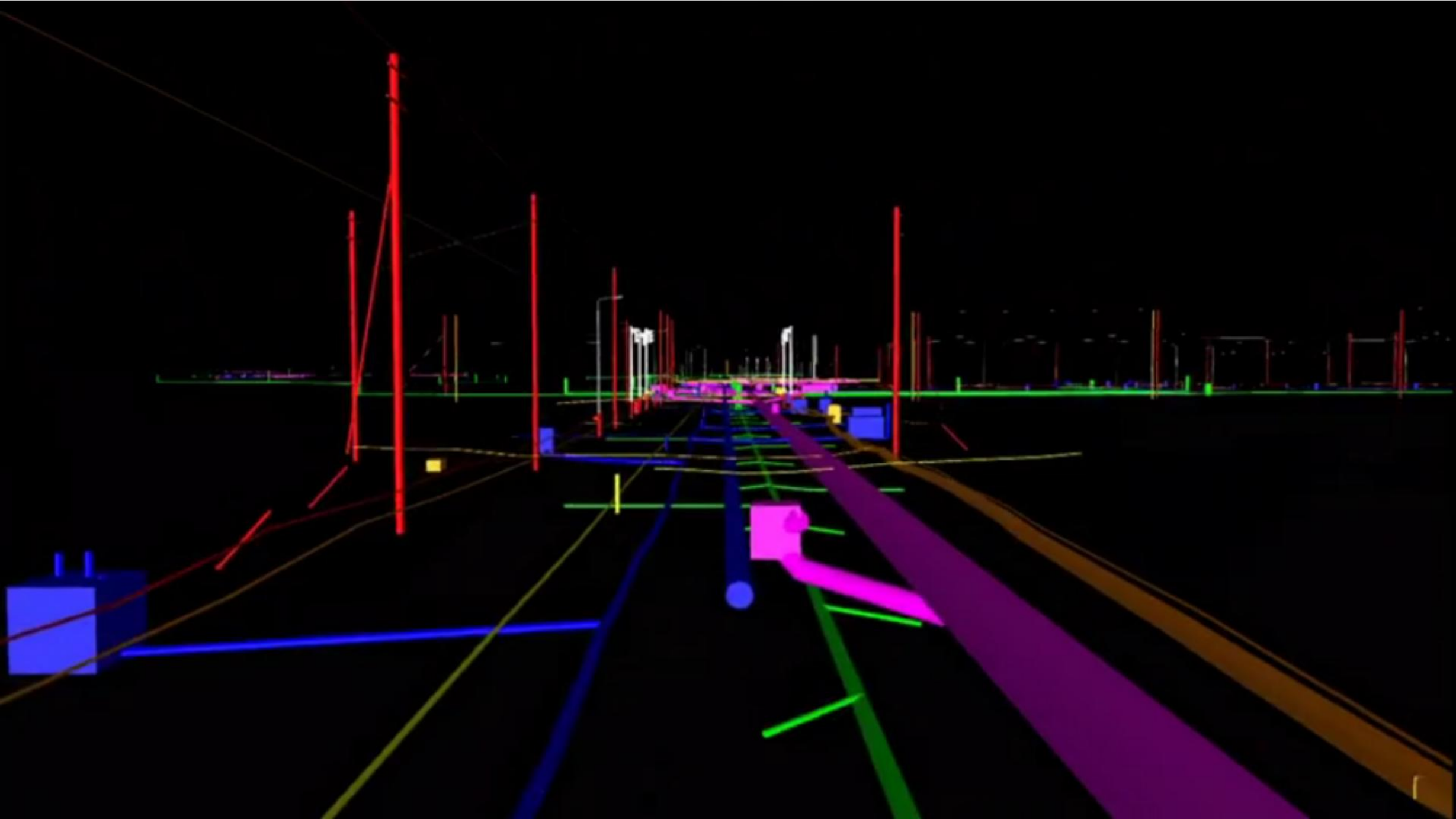
3

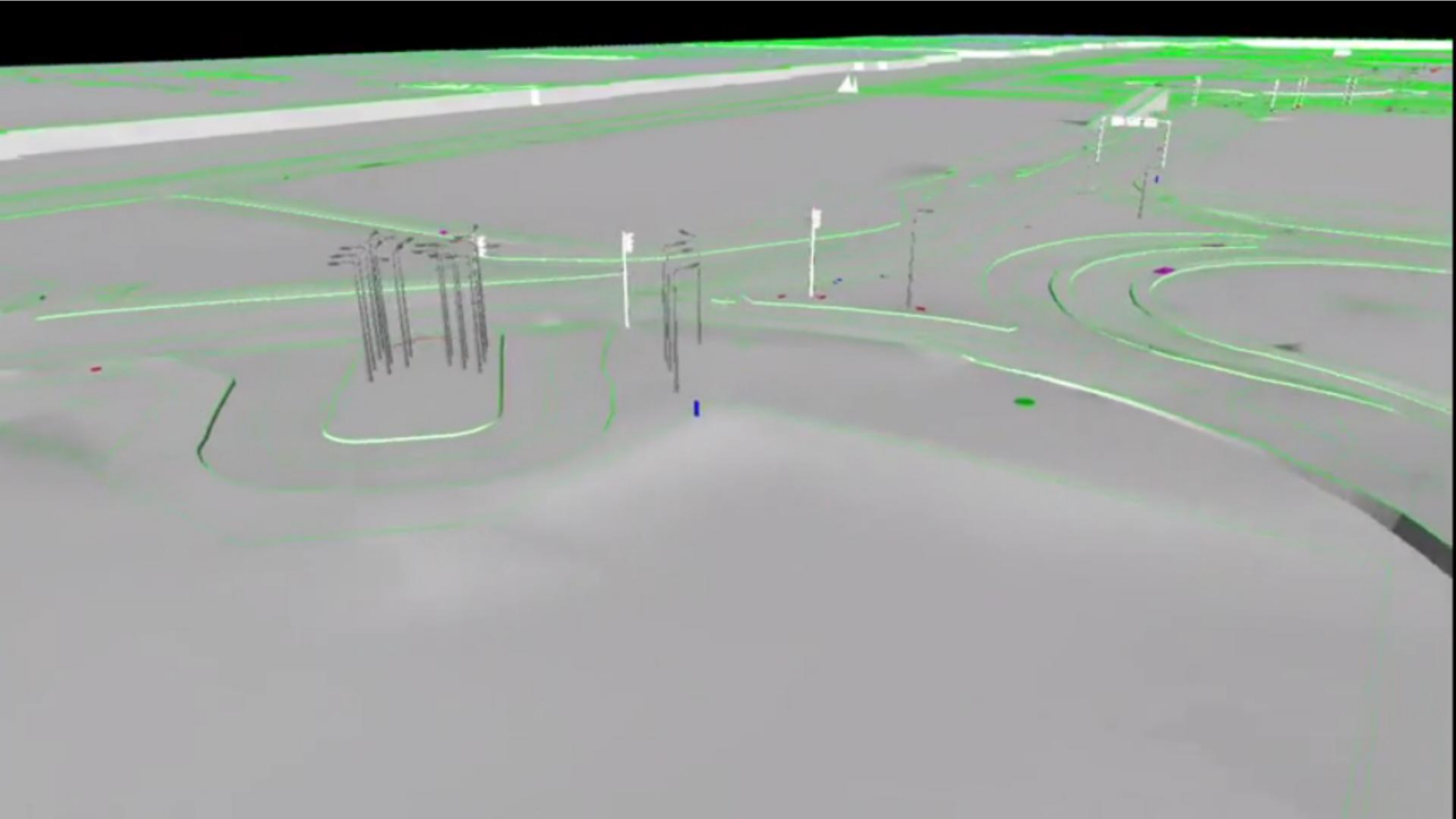
4

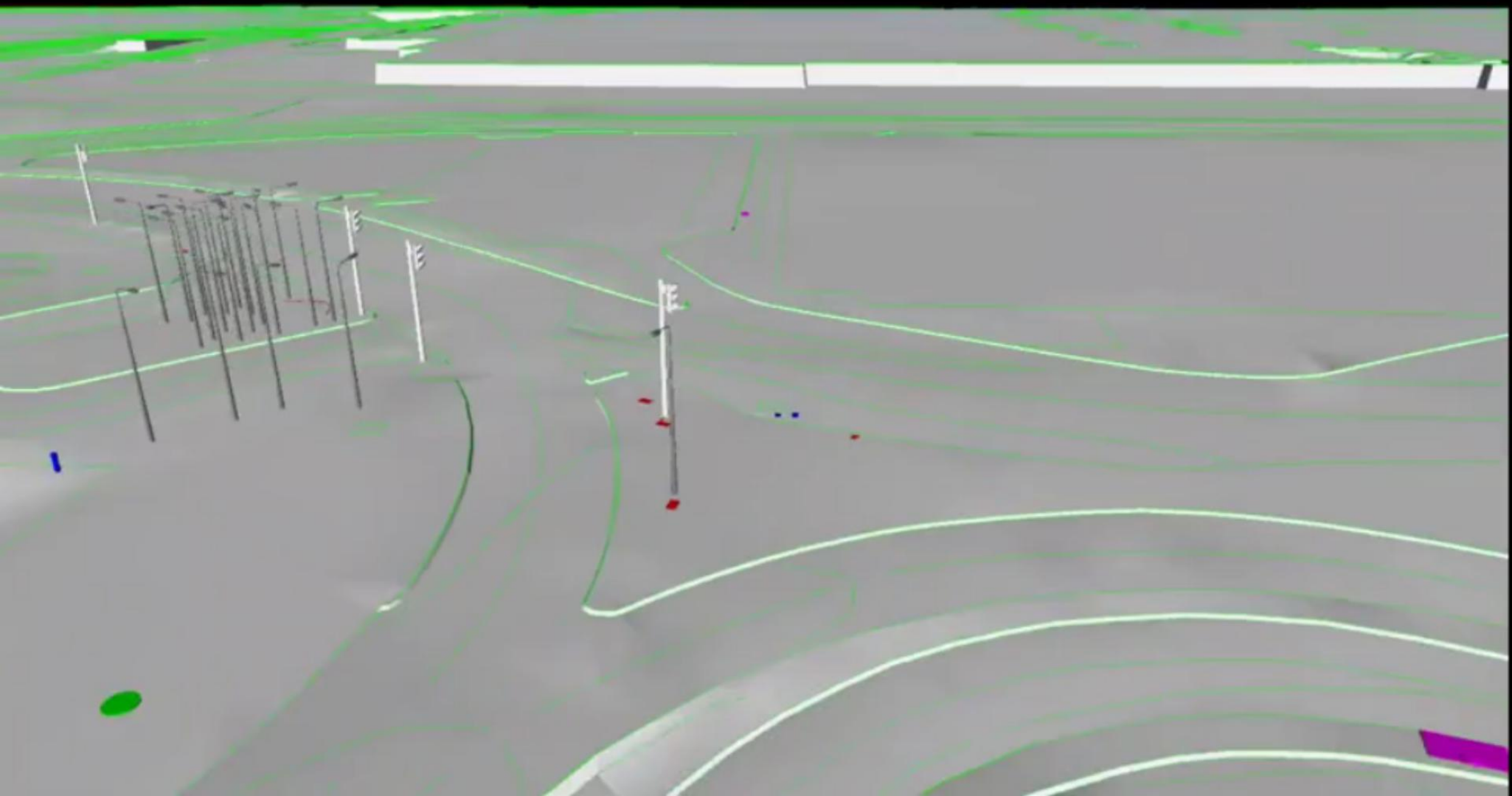
**HART**  
Light Rail City of Honolulu

RETURN ON INVESTMENT

10X









# 3D Pain Points with CADD/GIS



IMPORTING 3D UTILITY DATA IN CADD



MANAGING MULTIPLE RECORDS AND DATA



TRACKING UPDATES



STORING AND RETRIEVING 3D DATA

# 3D Pain Points with As-Built



SHARING INFORMATION WITH ALL TEAM MEMBERS



DATA COLLECTED WITH DIFFERENT STANDARDS



TIME TO UPDATE THE REPOSITORY



ASSOCIATING PICTURES AND FILES WITH FEATURES





# CADD Approach

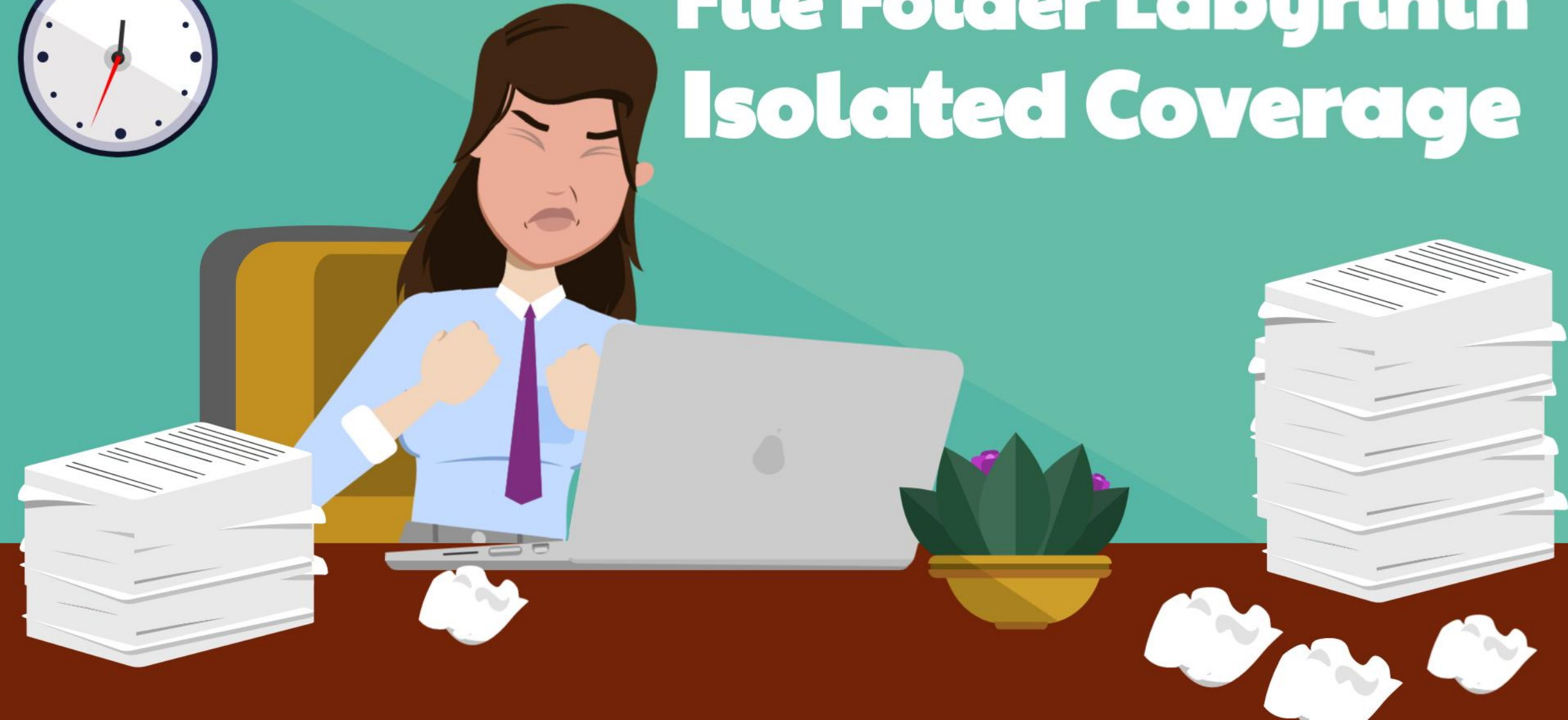
## Files Too Large

License and Training Required



# ProjectWise Approach

**File Folder Labyrinth**  
**Isolated Coverage**





# EASY



**COLLECT DATA ONCE  
AND REUSE**

# RELIABLE



**METADATA AND  
ATTRIBUTES**

# SOLUTION



**SUSTAINABLE  
REPOSITORY**

# Standards and Customization



**ASCE and OGC Data Standard**  
collection, storage, transfer, services



**Adaptable to Organizational  
Structure and Work Flows**



Simple  
&  
Easy





A man with a beard, wearing a dark shirt and light-colored pants, is sitting on a white chair at a wooden desk. He is looking at a computer monitor that displays a 3D model of a blue object. On the desk, there is a large orange 3D printer, a red spool of filament, a black kettle, and some other small items. The desk is in a room with a large window on the left and a white shelving unit on the right. The text "Import to 3D Design" is overlaid in the top right corner.

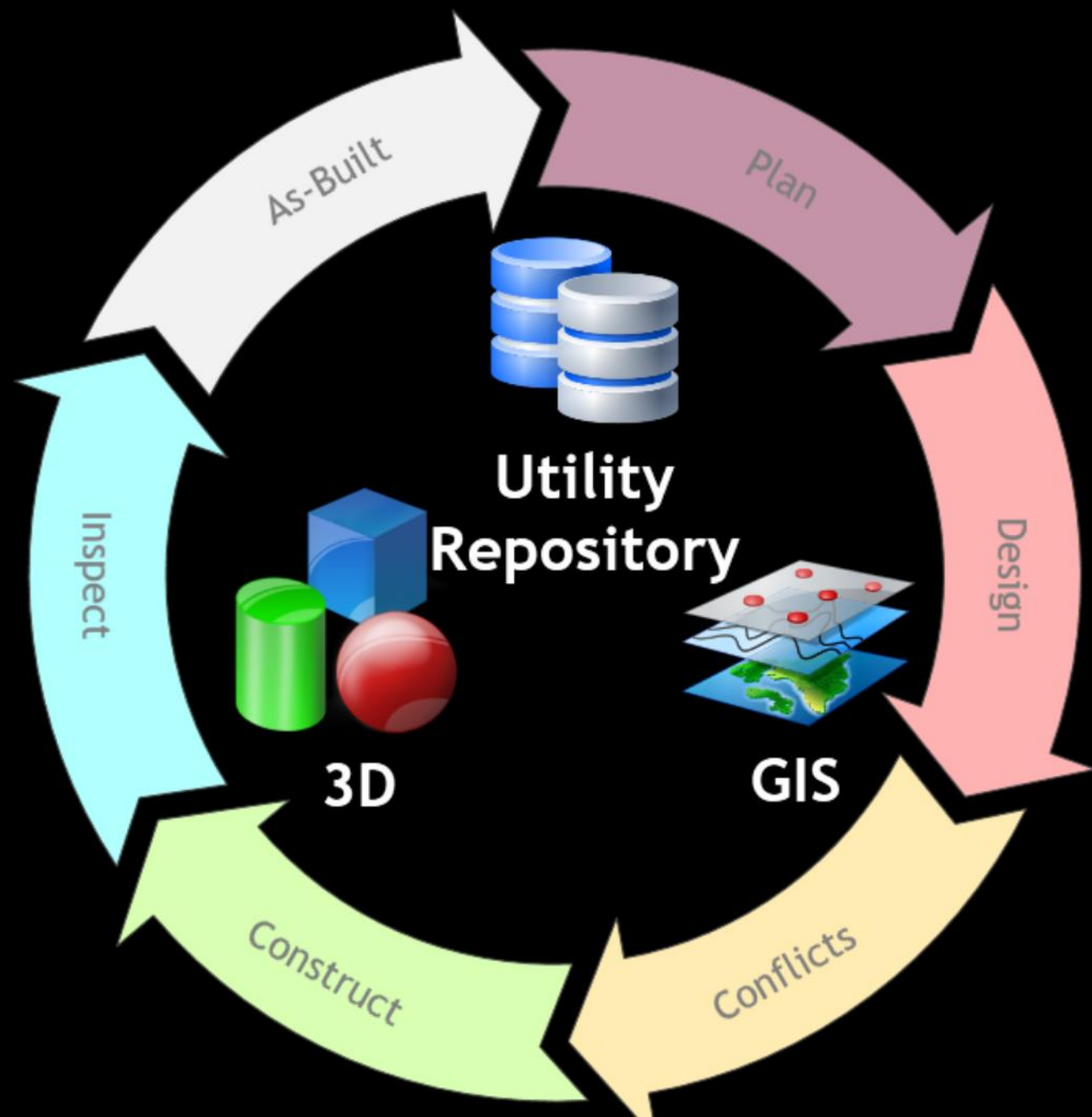
# Import to 3D Design

**OpenRoads  
Civil 3D  
BIM/CIM**





**MERGING UTILITY RECORDS AND SUE  
PHASED APPROACH**



# Keep it Simple



**Platform  
Indifferent**

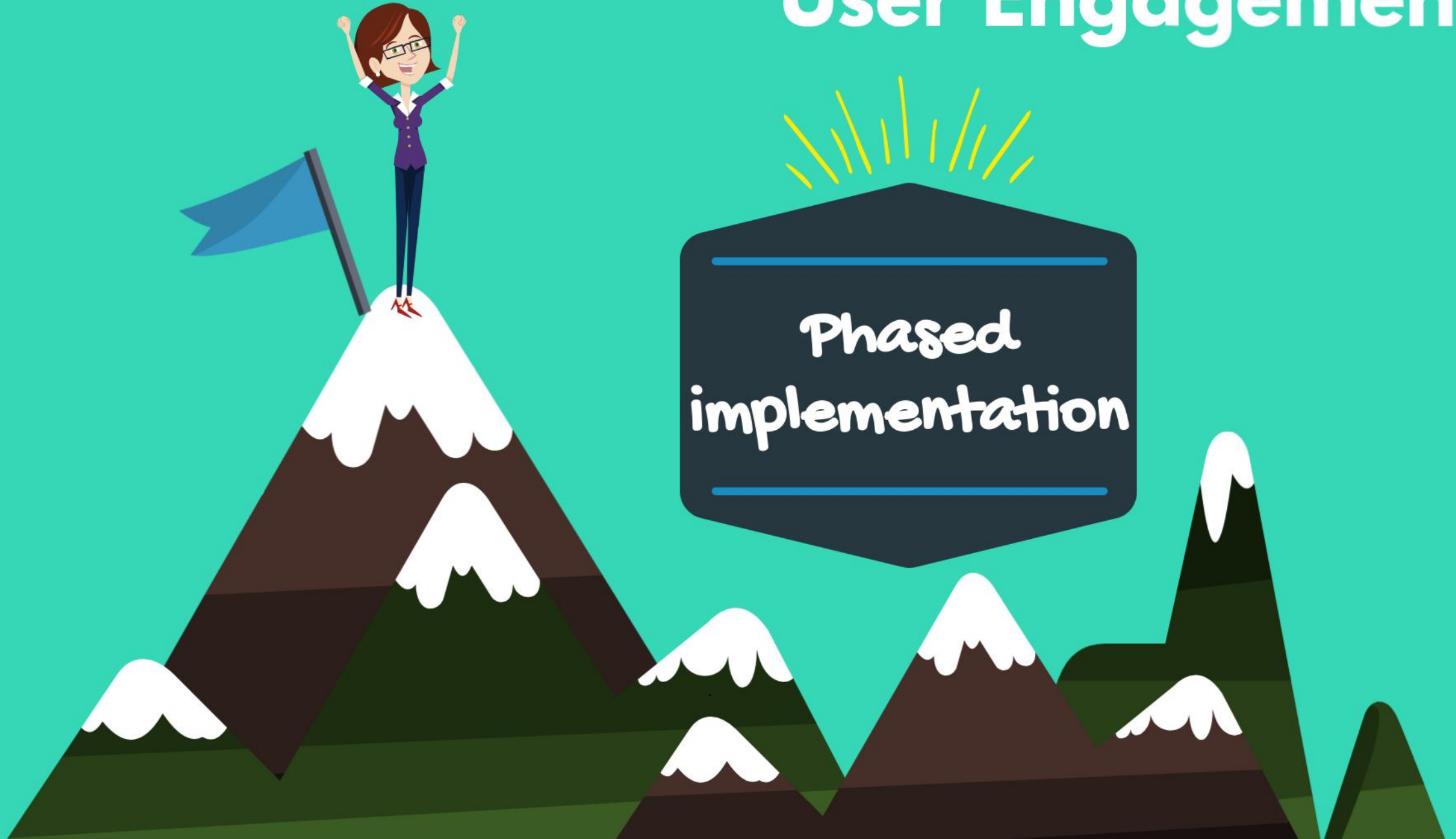


**Supporting  
Multiple Users**  
CADD/GIS

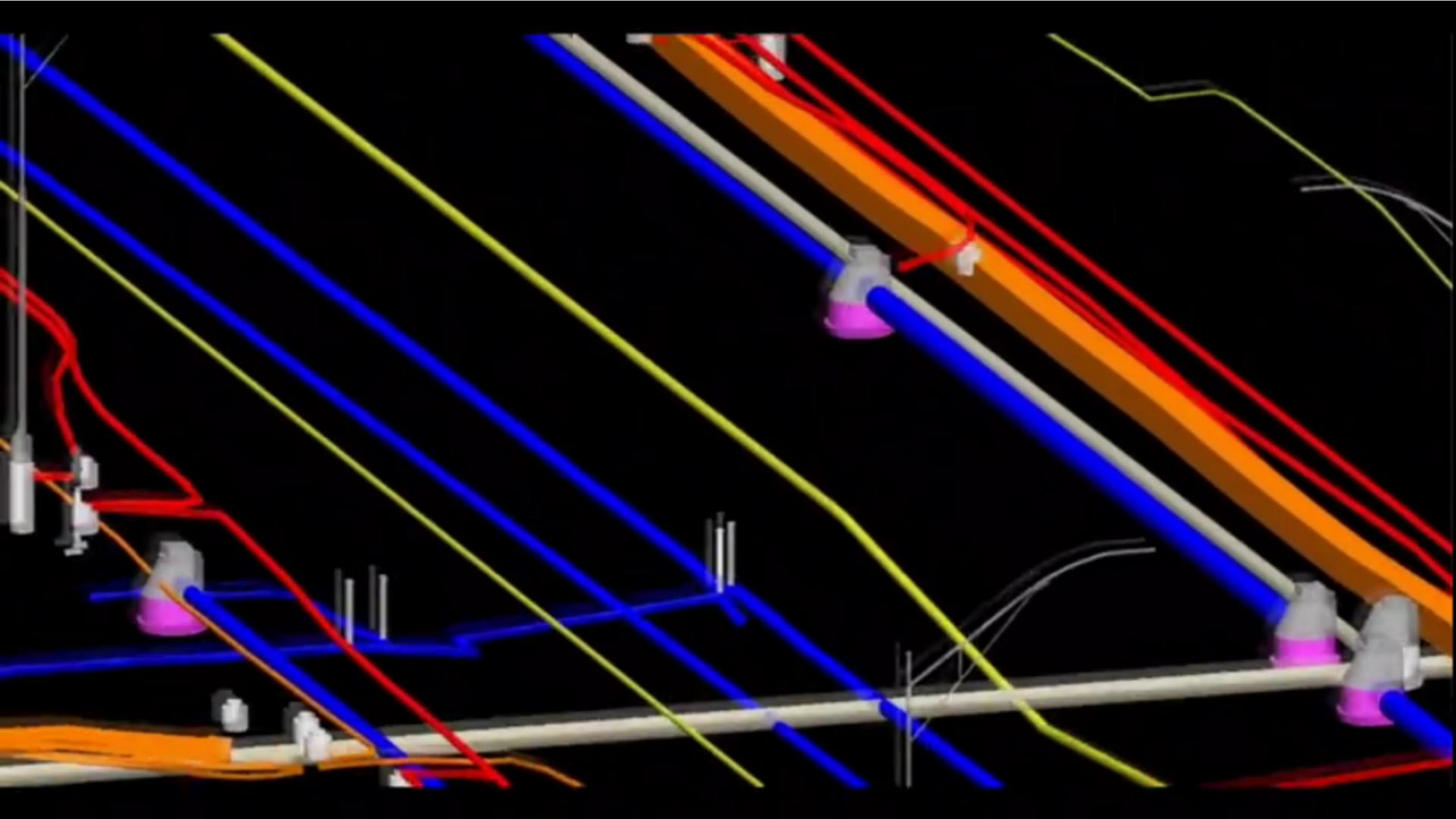


**Integrate  
Utility Permit**  
GIS 3rd Generation  
On-Line System

# User Engagement









**GEO.***works*<sup>TM</sup>