



## Photo galleries

### Southern Africa floods operation January 2008



Flood water on the 80-kilometre gravel road to Buzi off the main highway leading from Beira to Harare, Mozambique. Mozambican marines and Mozambique Red Cross (MRC) boat volunteers have been taking advantage of an apparent break in the rains upstream in the Buzi river system to hone their aquatic-rescue skills. Buzi is the national base for aquatic-rescue training by the Red Cross in Mozambique.

(p17096)

*Photo: Alex Wynter/International Federation*

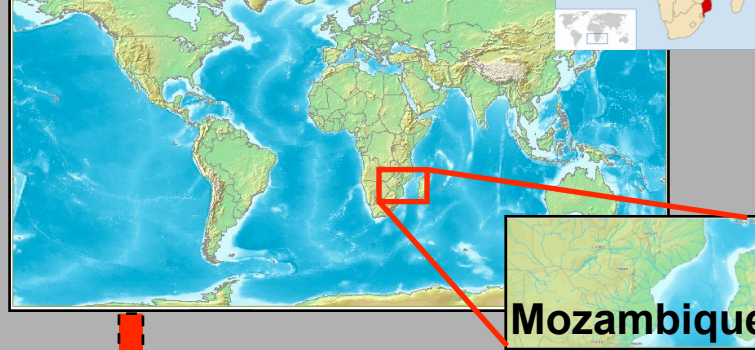
◀ [Back to photo gallery homepage](#)



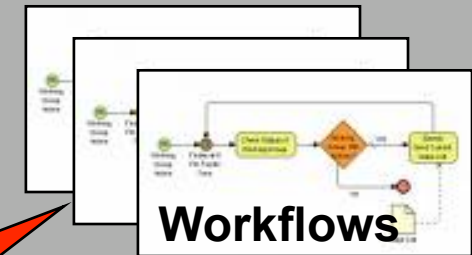
desired theme(s) and  
area of interest

## Disaster Management Information System (DMIS)

-  Air Quality
-  Coral Bleaching
-  Droughts
-  Earthquakes
-  Excessive Heat
-  Fire Weather
-  **Flooding**
-  Harmful Algal Blooms (HABs)
-  Hurricanes/Tropical Weather
-  Oil Spills
-  Rip Currents
-  Severe Weather
-  Space Weather
-  Tsunamis
-  Volcanoes

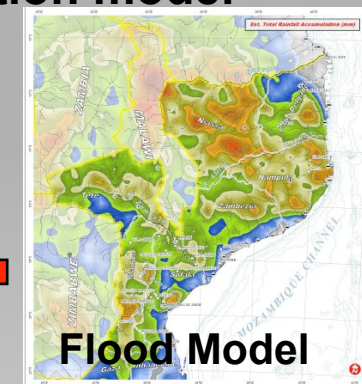
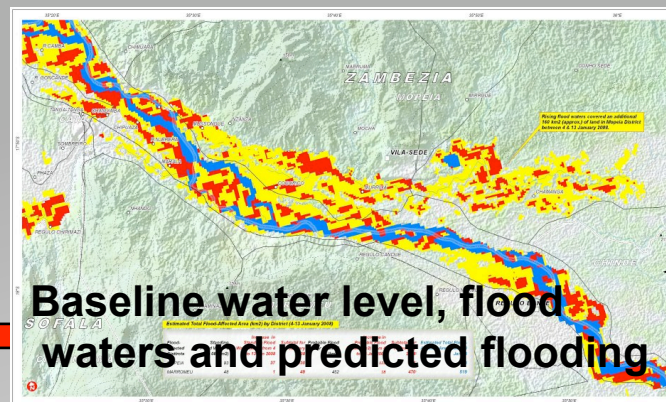


Selected workflow  
automatically activates  
needed assets and models



Wizard picks  
appropriate  
workflow for  
desired result

Estimated rainfall  
accumulation and flood  
prediction model



IRI Six-Day Total Forecast Precipitation Anomaly: for climatic /precipitation anomalies

Tropical Storm Risk (TSR): for track of storms/cyclones

Naval research Lab satellite images of storms/cyclones

ALOS

- PALSAR

TRMM

Terra and Aqua

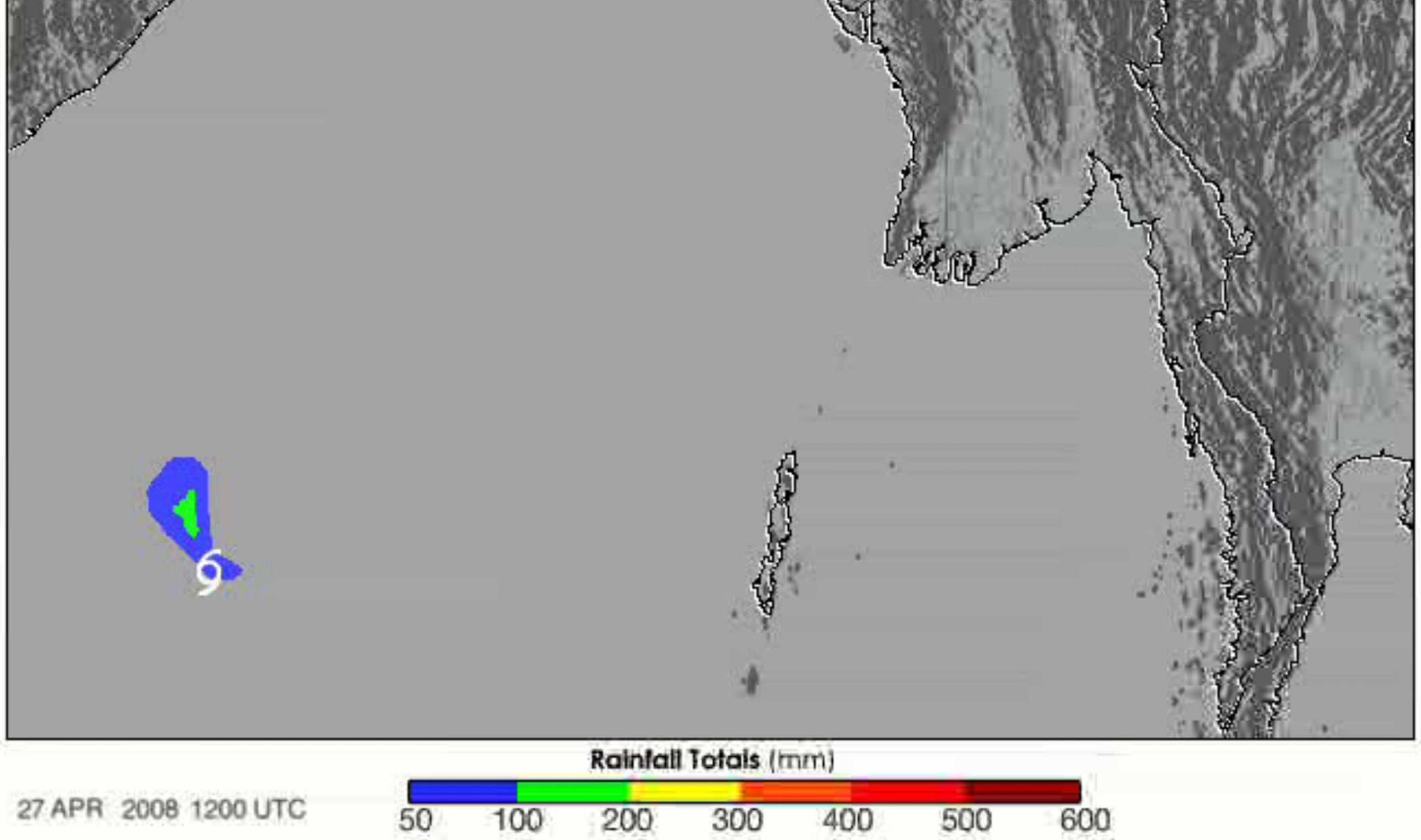
- MODIS

Earth Observing 1 (EO-1)

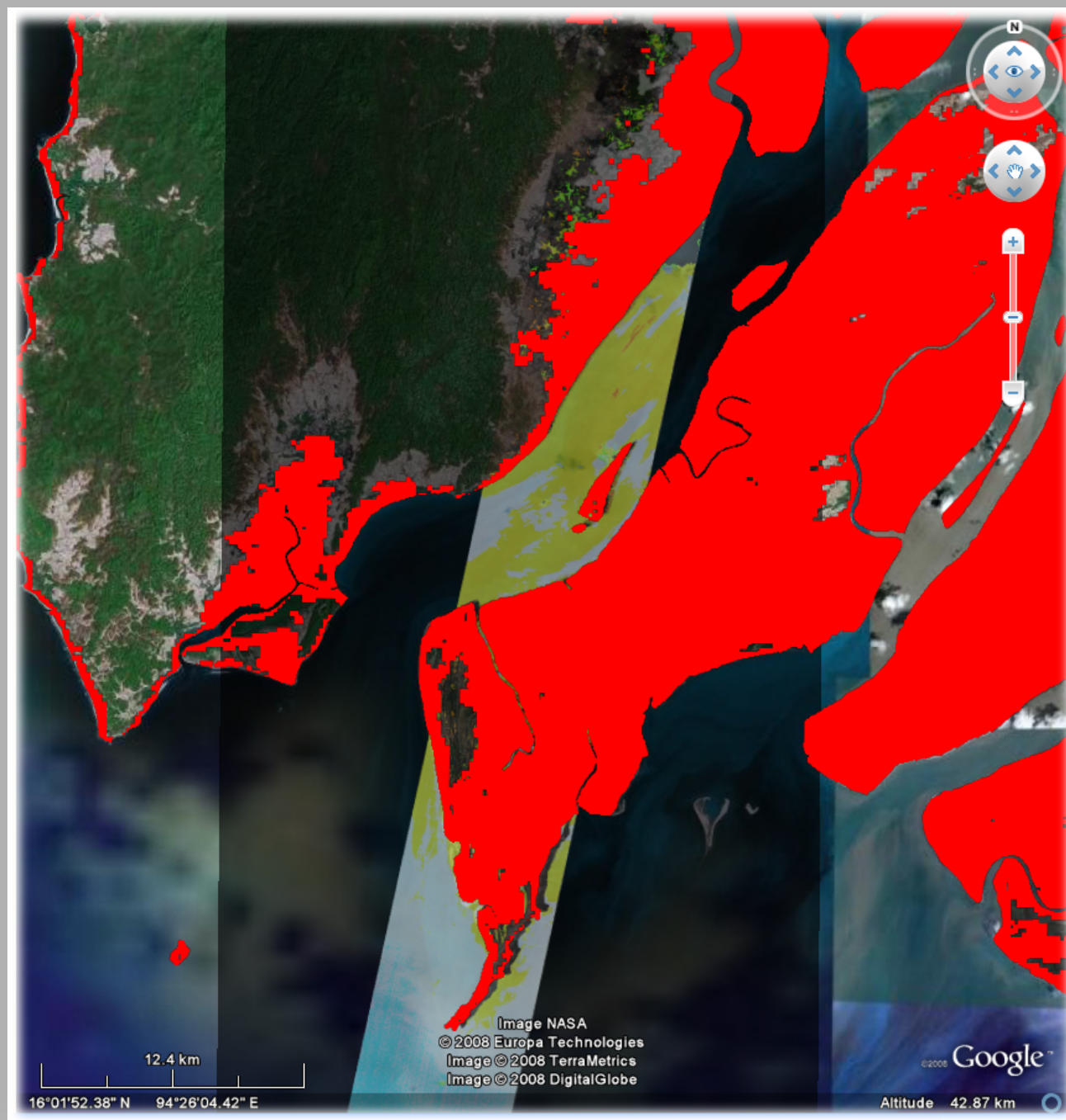
- Hyperion
- Advanced Land Imager

**sensors and data used for first prototype (Nargis cyclone – Myanmar)**





# NARGIS TRMM Animation of Rainfall Progression



ALOS/Palsar data in red





EO-1 Hyperion Visible image



**0-1 Hyperion flood classifier: Clear water, muddy water, and muddy water classifier**



User defines desired automatic workflows and specifies workflows with easy menu

## Example workflow

- Monitor rainfall anomalies (e.g. TRMM)
- Obtain Naval research Lab satellite images of storms/cyclones
- Obtain ALOS PALSAR data
- Obtain Terra and Aqua MODIS data
- Trigger smaller area of interest based on survey data: Earth Observing 1 (EO-1) high resolution Hyperion and Advanced Land Imager data
- Classify water into muddy, murky, salt and clear water
- Sample decision by Red Cross: If salt water flood, send fresh water. If non-salty water floods then send water purifiers.