

MAYOR OF LONDON

LONDON INFRASTRUCTURE MAPPING APPLICATION

05 September 2017
Location Powers: Underground



What is the London Infrastructure Mapping Application?

An interactive, online tool designed to integrate infrastructure and development data, encouraging coordination and strategic planning across the Capital.

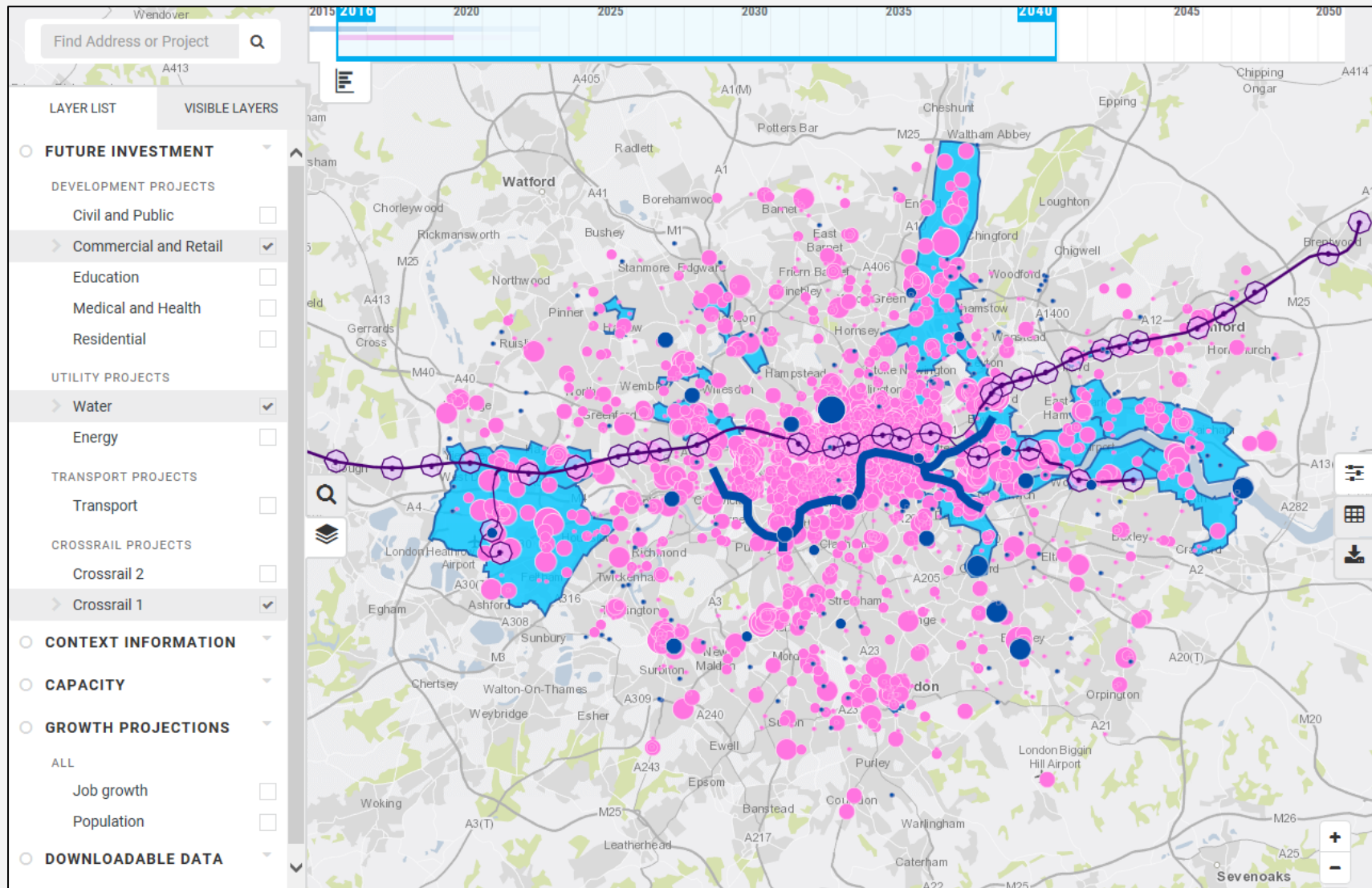
Key Aims:

- Provide **forward insight** and increased **certainty**
- Serve as a single '**source of truth**' for infrastructure stakeholders.
- Encourage **joint provision** among utilities

LONDON INFRASTRUCTURE MAPPING APPLICATION

MAYOR OF LONDON

Over 12,000 pieces of data: energy, transport, water, development, and more.



Where does the London IMA get its data?

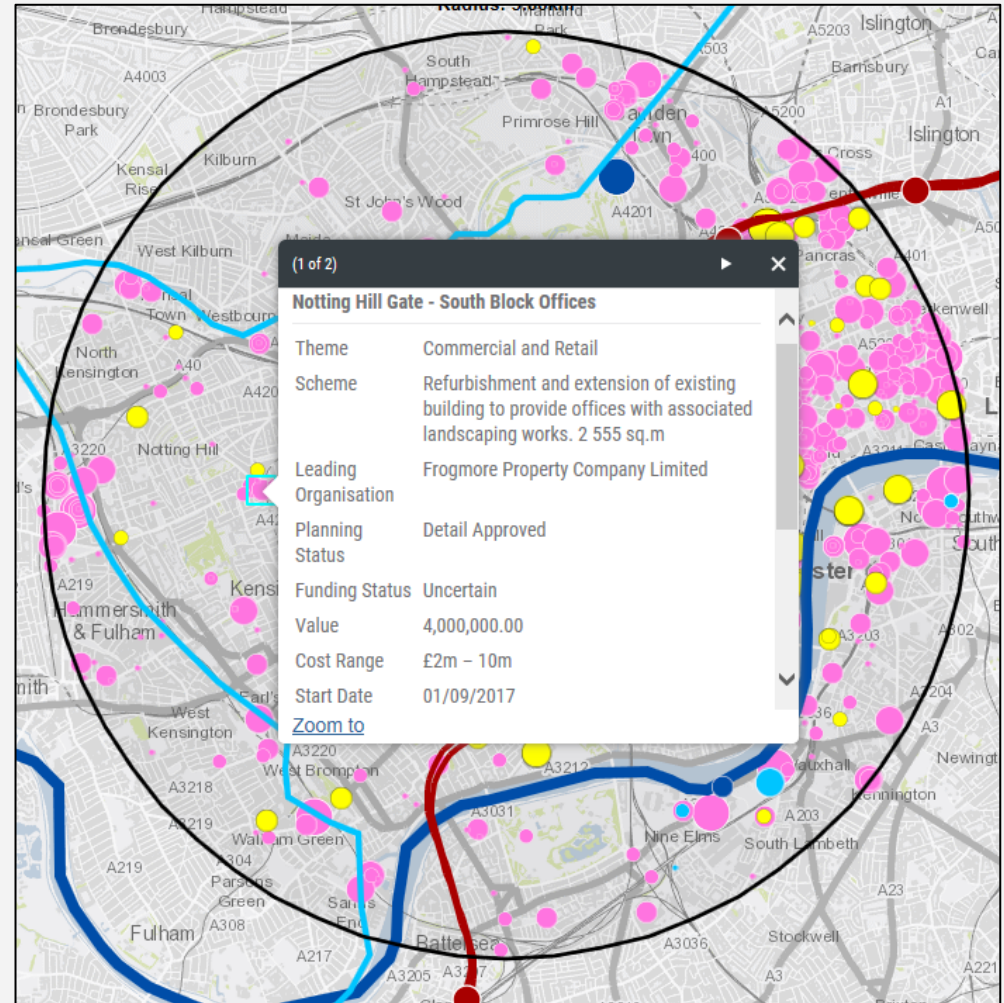
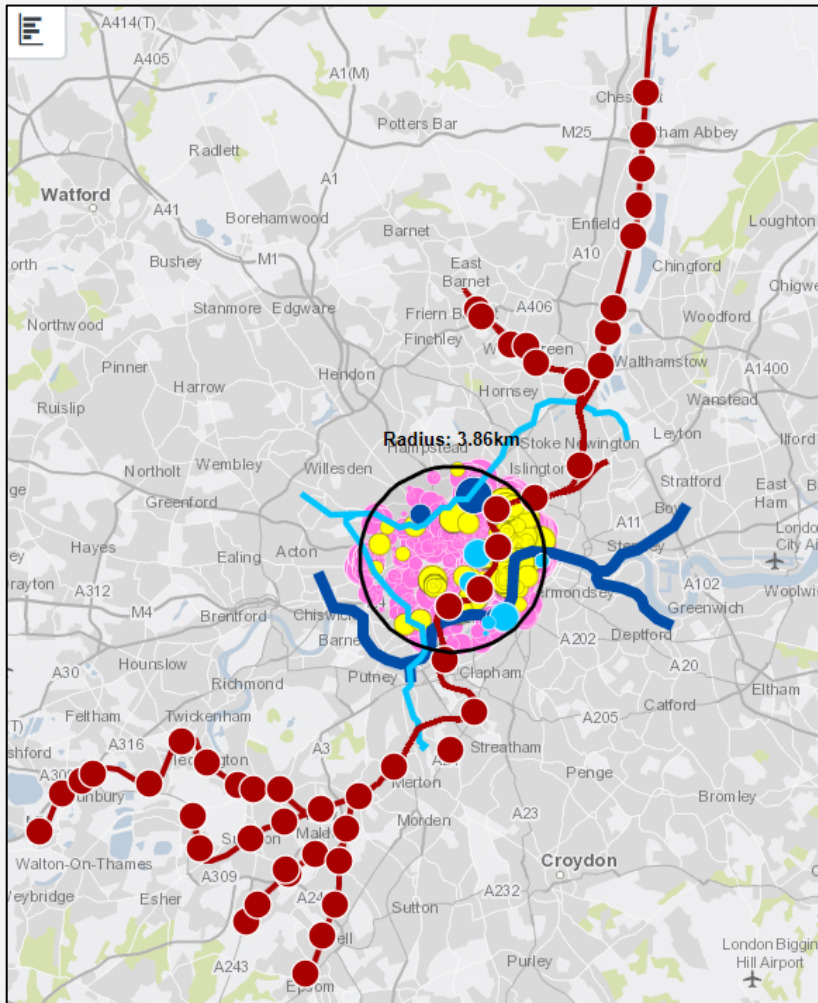
Data input from:

- Mayor of London
- London Development Database
- Barbour ABI
- Environment Agency
- Transport for London
- UKPN
- Cadent
- SGN
- Thames Water
- Coming soon: Network Rail

Two versions of the map:

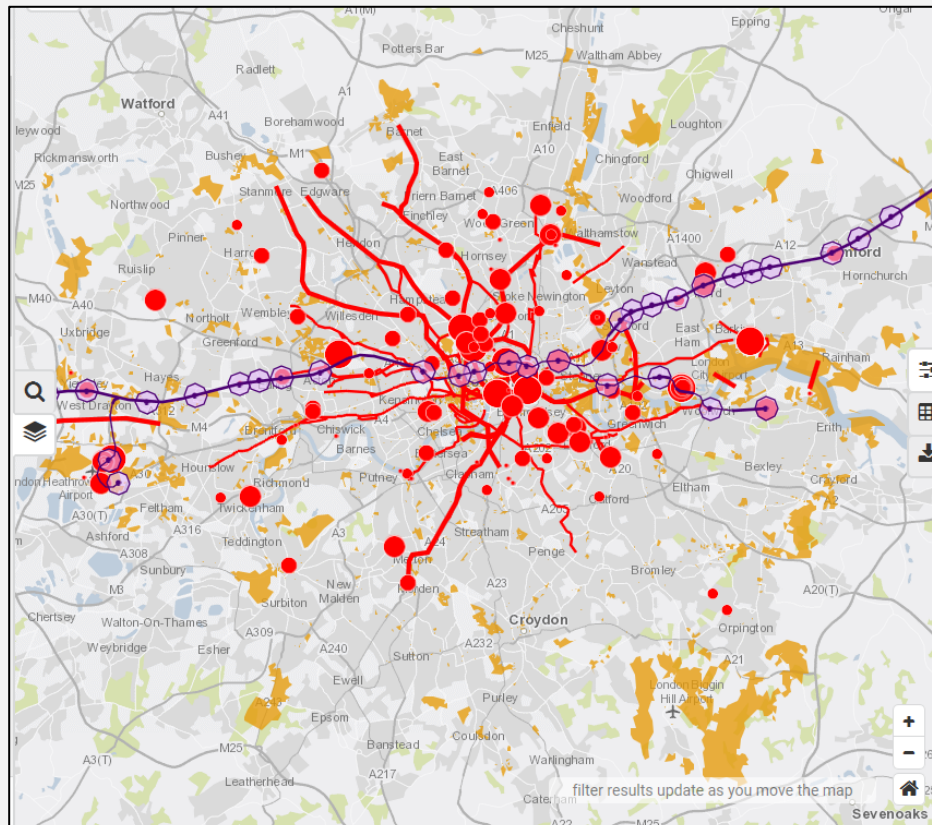
- Publicly accessible – boroughs, industry
- Privately accessible – utilities / providers. Login required.

The London IMA can highlight an area of interest, with detailed project information.

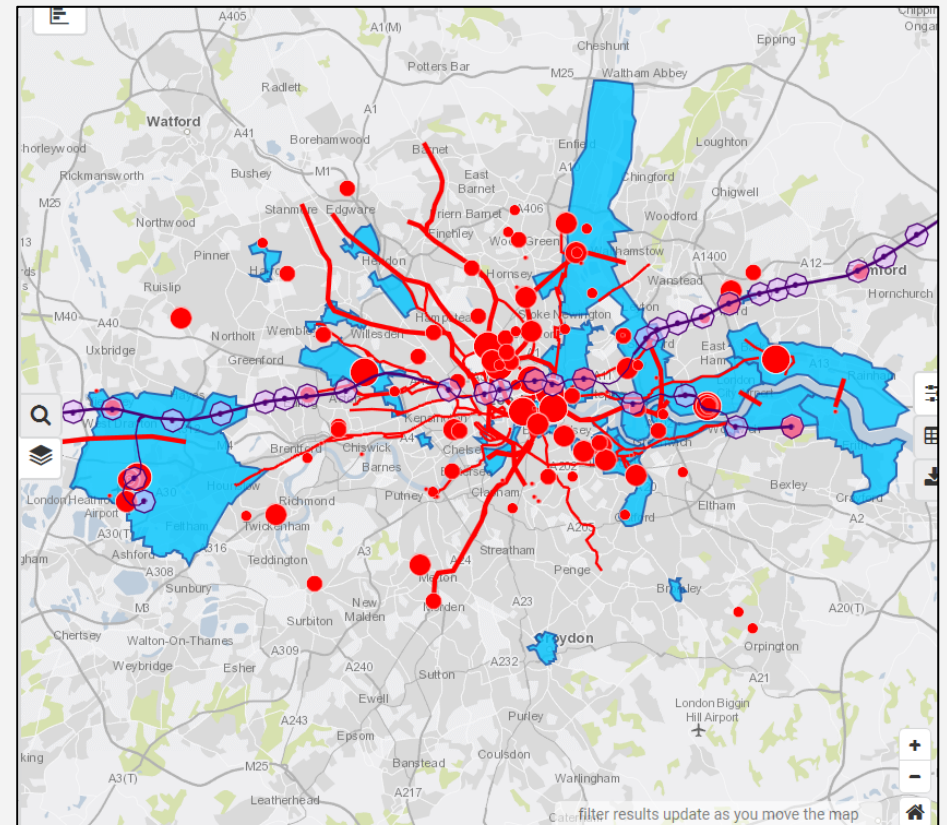


Capacity/context layers facilitate informed decision making and long-term planning.

Broadband Not Spots



Opportunity Areas



Incorporating Underground Assets

CHALLENGES

- **Security** concerns
- Limited **quantity** of **existing data**
- Achieving consistent data **formats**
- **Collection** methods and technologies

Incorporating Underground Assets

GLA INVOLVEMENT

- Will provide neutral, **public-sector support** for collecting complex, sensitive data
- Will serve as a **trusted hub** for accessing reliable data
- Example: Thames Water: **London Vault** Project
 - GLA helped make business case
 - Ongoing collaboration through proof of concept and implementation

Get in Touch

WE WELCOME FEEDBACK AND IDEAS

- **Greater London Authority:** Growth and Infrastructure Team
- **Email us:** ima@london.gov.uk
- **IMA site:** <https://maps.london.gov.uk/ima/>